

**TOXIC TISSUE!  
NO PAIN, NO PROBLEM?!**



Dr. Fabian Schick

# Meet our team



Dr. Johann Lechner

Dentist  
Author  
International Speaker  
Naturopath



Dr. Fabian Schick

Specialist for Biological Dentistry and  
Ceramic Implants (ISMI/IAOCI)



Dr. Florian Notter

Certified Implantologist (DGI)



Praxisklinik Ganzheitliche  
ZahnMedizin, München

# My way to become a specialist for biological dentistry and ceramic implants...



Spezialist  
seit 2021

München (DE)

Dr. Fabian Schick

„Mit dem Keramikimplantat von SDS hat die biologische Zahnmedizin ein Tool an die Hand bekommen, das es ermöglicht neben all den immunologisch-gesundheitlichen Vorteilen auch höchsten ästhetischen und funktionellen Ansprüchen gerecht zu werden.“

Sowohl für Patienten als auch für Behandler ist das ein absoluter Gamechanger.“

# Mindset next generation

Chronic Health Issues

Sustainability

Spirit next  
generation

Lifestyle

Nutrition

Balance

Wellness

Quality of Life

Health Optimization

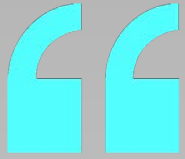
Immunesystem

Biohacking

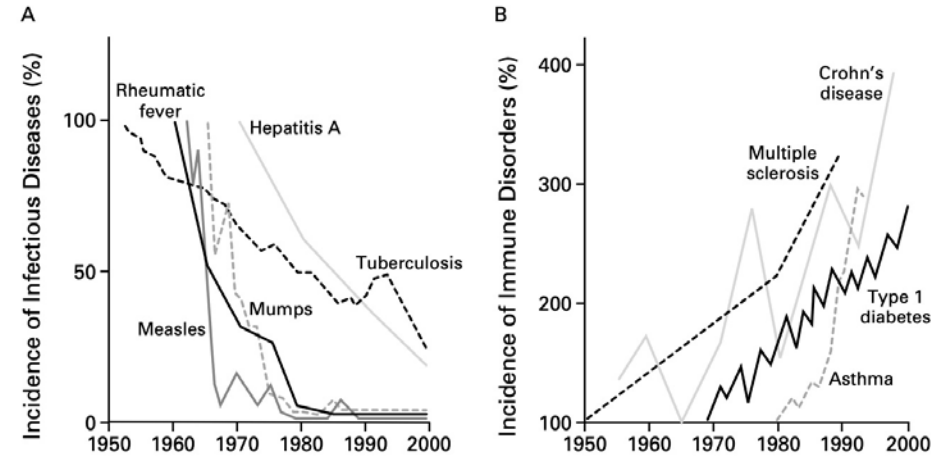
Pandemic

**DENTISTRY?!**





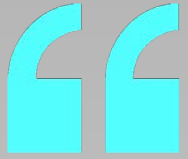
Allergic and autoimmune disorders increase steadily



**Figure 1.** Inverse Relation between the Incidence of Prototypical Infectious Diseases (Panel A) and the Incidence of Immune Disorders (Panel B) from 1950 to 2000.

In Panel A, data concerning infectious diseases are derived from reports of the Centers for Disease Control and Prevention, except for the data on hepatitis A, which are derived from Joussemet et al.<sup>12</sup> In Panel B, data on immune disorders are derived from Swarbrick et al.,<sup>10</sup> Dubois et al.,<sup>13</sup> Tuomilehto et al.,<sup>14</sup> and Pugliatti et al.<sup>15</sup>

Bach, J.-F. The Effect of Infections on Susceptibility to Autoimmune and Allergic Diseases. *N Engl J Med* **2002**, 347, 911–920, doi:10.1056/NEJMr020100.



Wir wissen heute, dass viele chronische Erkrankungen ihren Ursprung in der Mundhöhle haben.

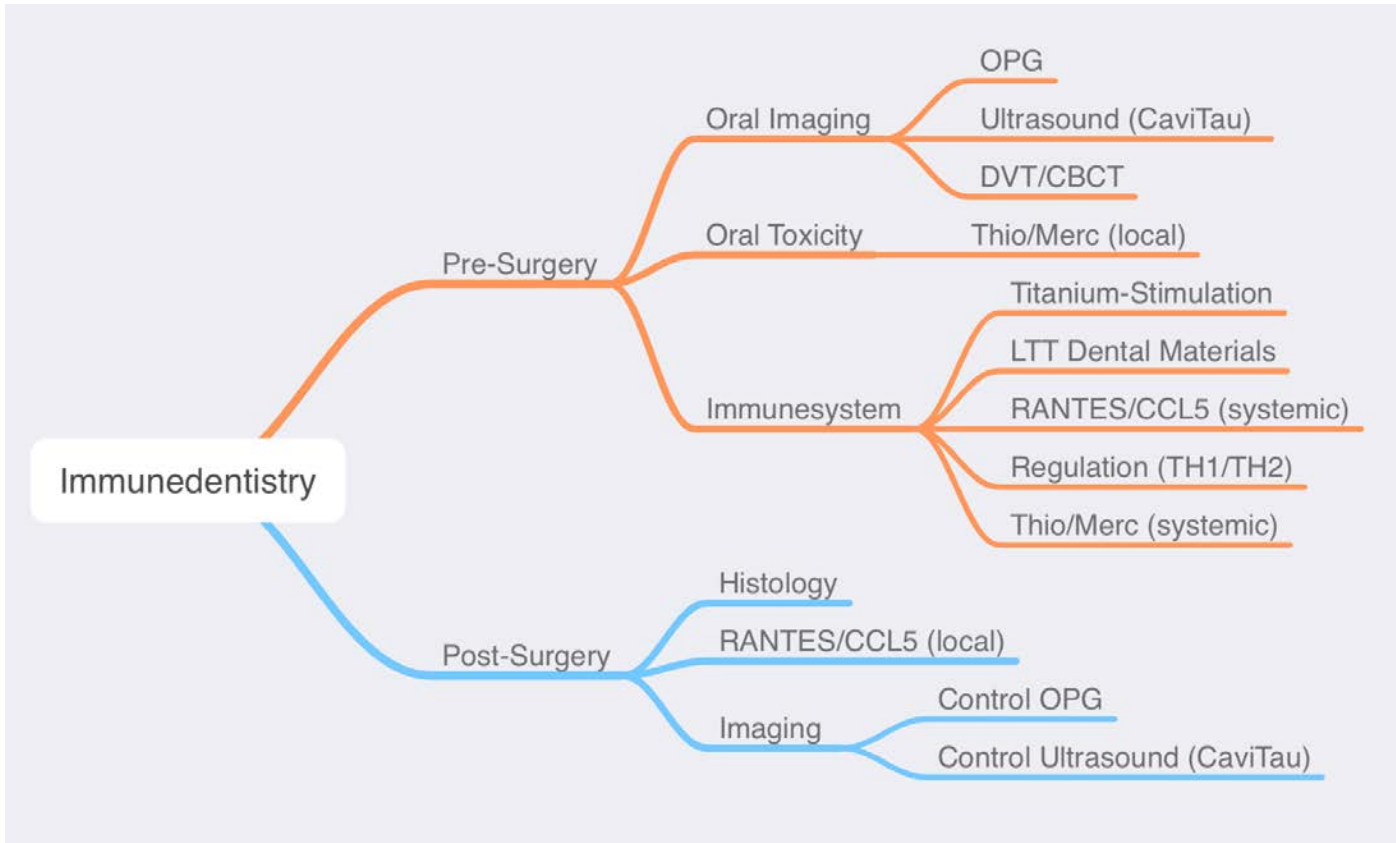
Prof. Dr. Thomas Zeltner, Vorsitzender WHO, 2022

<https://www.zwp-online.info/zwpnews/dental-news/branchenmeldungen/den-weg-ebnen-fur-eine-gesunde-zahnmedizin>

**ANSWERS?!**



# But where is the connection Oral & Overall Health?



- Chronic stress and dysregulation  
-> chronic autoimmune disorder?
- What are the stressors disturbing  
regulation and homeostasis?
- Where is the medical indication?

#immunodentistry  
#individualized  
#sciencebased

# A clinical case report – Chronic Inflammatory Autoimmune diseases

1. Can Oral stressors and increased cytokine expressions from the jawbone cause immunological

**dysregulation, dysbalance?**

2. May this affect chronic inflammatory autoimmune diseases such as Atopic Dermatitis?!





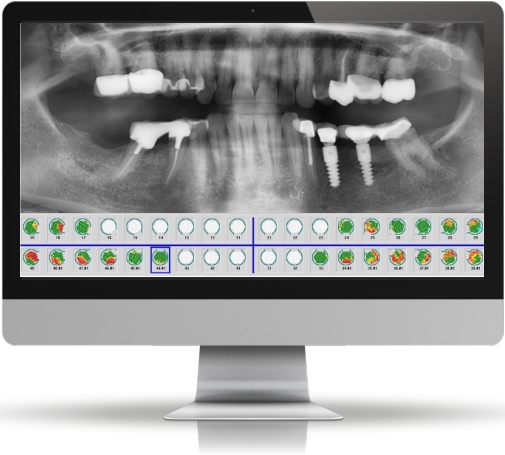
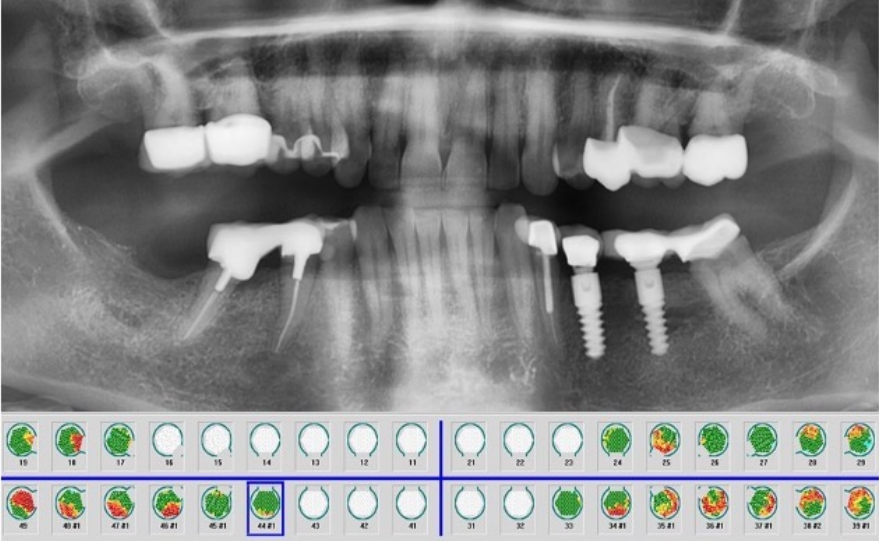


There was a significant association between the upregulating variant of RANTES -28G and atopic dermatitis, ... These results support a role for RANTES promoter polymorphisms in susceptibility to atopic dermatitis.

Tanaka K, Roberts MH, Yamamoto N, Sugiura H, Uehara M, Hopkin JM. Upregulating promoter polymorphisms of RANTES relate to atopic dermatitis. *Int J Immunogenet.* 2006;33(6):423–428. doi:10.1111/j.1744-313X.2006.00635.x

# CaviTAU – Ultrasound measuring bone quality

- Green -> healthy bone structure
- Red -> osteolytic bone -> increased levels of RANTES/CCL5 (2)



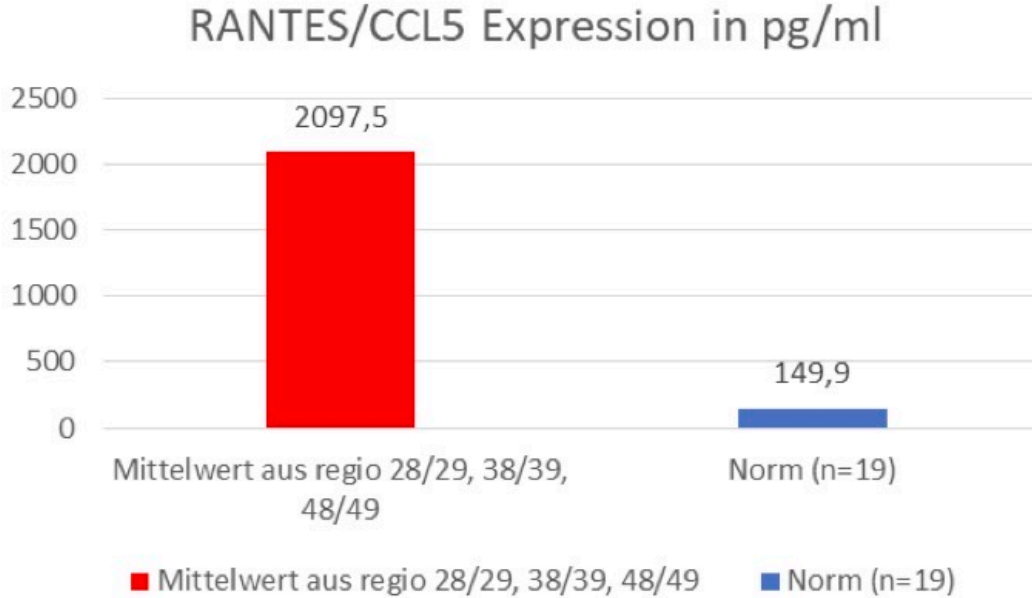
Identification?  
Indication.  
Regeneration!



Lechner J, Zimmermann B, Schmidt M, von Baehr V. Ultrasound sonography to detect focal osteoporotic jawbone marrow defects clinical comparative study with corresponding Hounsfield units and RANTES/CCL5 expression. Clin Cosmet Investig Dent. 2020;12:205–216.. doi:10.2147/CCIDE.S247345

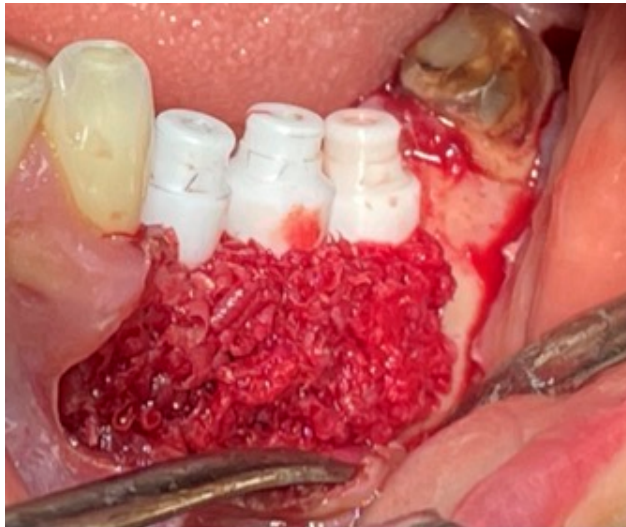
# Silent inflammation – No Pain, No problem?

Increased Cytokine (RANTES/CCL5) Level in probe of osteolytic bone (FDOJ)



# What now? -> Biological-Functional Regeneration

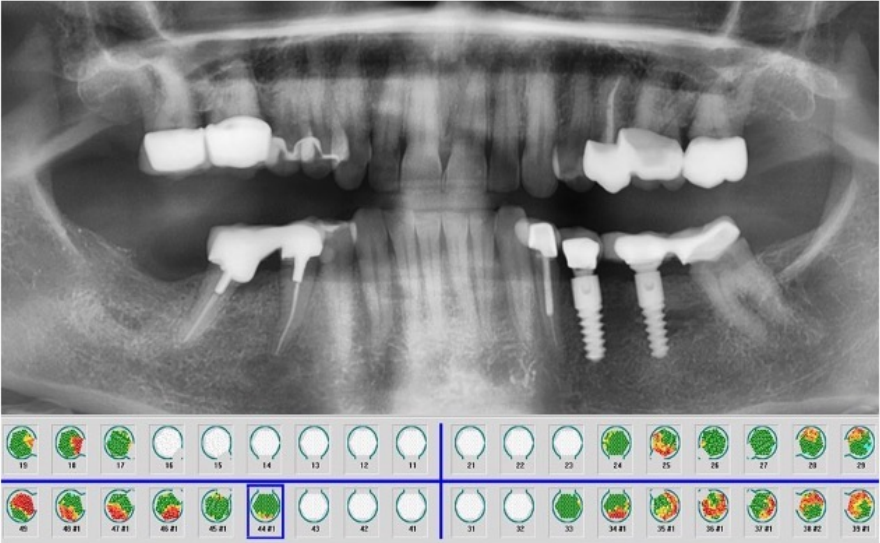
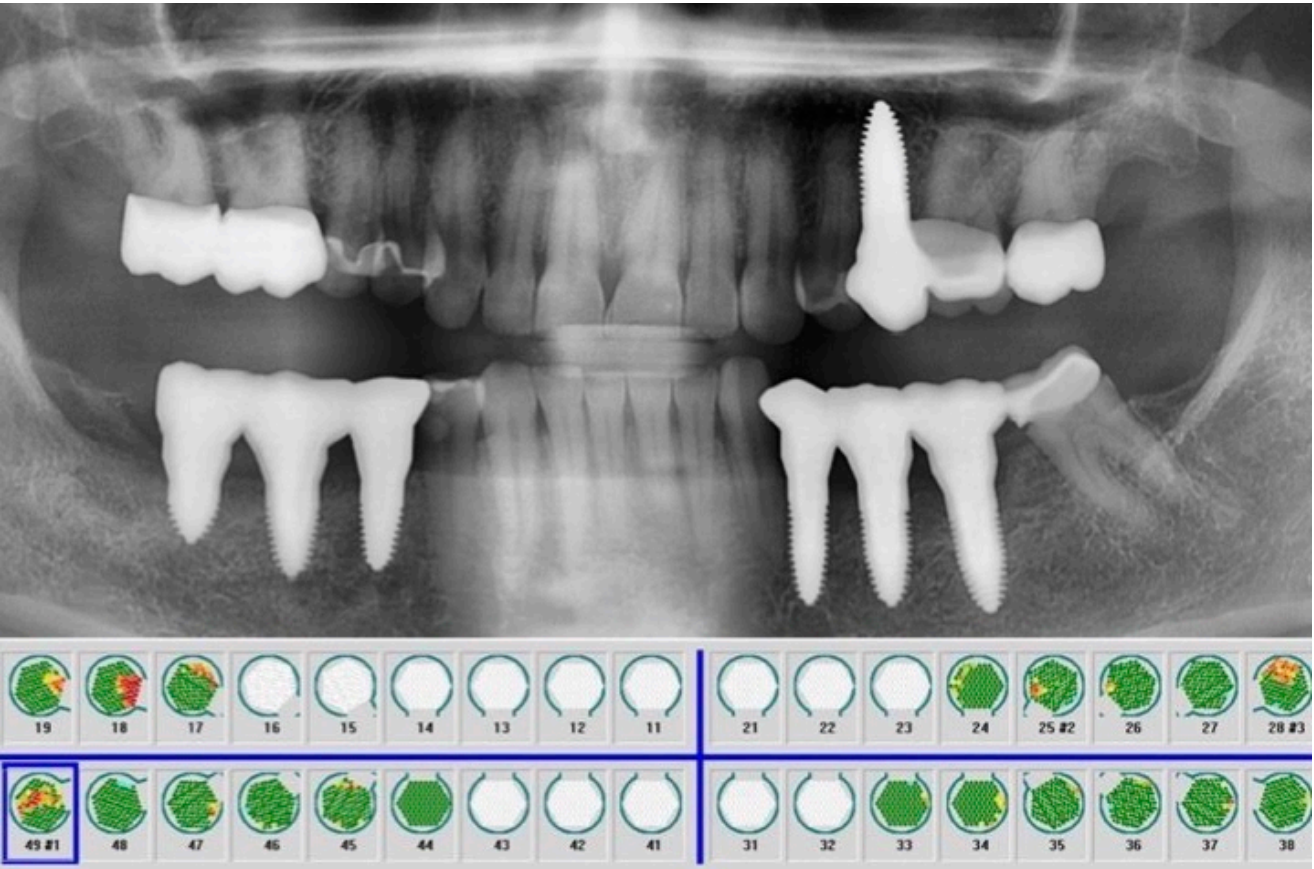
A-PRF  
OZONE  
AUTOLOGOUS AUGMENTATION  
BIOINERT MATERIALS (Ceramic Implants)



#minimal-invasive  
#respectbiology  
#possiblewithSDS



# Control Oral Health Ultrasound after 6-9 months



# Even more important: Overall Health



Retrospectively, the patient reports a healing success of 85% and a **“real game-changer”**.

[Int Med Case Rep J.](#) 2022; 15: 323–338.

Published online 2022 Jun 25. doi: [10.2147/IMCRJ.S367434](https://doi.org/10.2147/IMCRJ.S367434)

PMCID: PMC9242433

PMID: [35782227](https://pubmed.ncbi.nlm.nih.gov/35782227/)

Linking Dentistry and Chronic Inflammatory Autoimmune Diseases – Can Oral and Jawbone Stressors Affect Systemic Symptoms of Atopic Dermatitis? A Case Report

[Fabian Schick](#),<sup>1</sup> [Johann Lechner](#),<sup>1</sup> and [Florian Notter](#)<sup>1</sup>

▶ [Author information](#) ▶ [Article notes](#) ▶ [Copyright and License information](#) [Disclaimer](#)



Case Reports

Linking Dentistry and Chronic Inflammatory Autoimmune Diseases – Can Oral and Jawbone Stressors Affect Systemic Symptoms of Atopic Dermatitis? A Case Report

Fabian Schick et al. Int Med Case Rep J. 2022.

[Free PMC article](#)



What is our vision?!

Bringing patients back in  
regulation and homeostasis

Patients oral AND overall  
health for a better  
Quality of Life

DREAM  
BIG



# Strengthening network



LESS METALS

MORE  
CERAMICS

#oraldetox  
@fabischick



# Clean dentistry. Action!



And on top: Beautiful esthetics and healthy tissues as a byproduct





An aerial, top-down view of turbulent teal water. The water is dark green and teal, with numerous white foam patches and splashes scattered across the surface, indicating strong currents or a wake. The lighting is bright, highlighting the texture of the water and the foam.

**Thank you.**